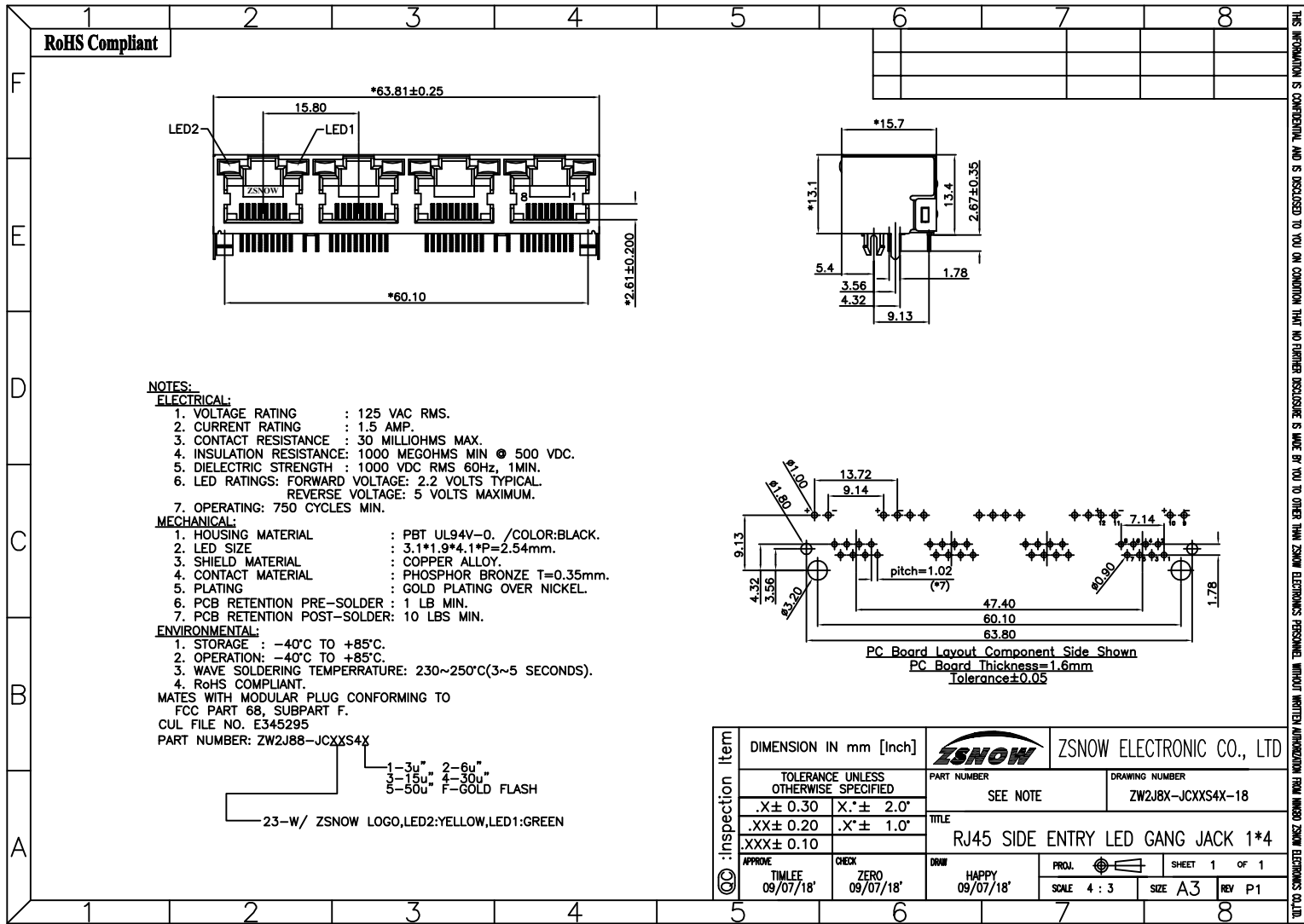


网站图纸



RoHS Compliant

NOTES:

ELECTRICAL:

1. VOLTAGE RATING : 125 VAC RMS.
2. CURRENT RATING : 1.5 AMP.
3. CONTACT RESISTANCE : 30 MILLIOHMS MAX.
4. INSULATION RESISTANCE: 1000 MEGOHMS MIN @ 500 VDC.
5. DIELECTRIC STRENGTH : 1000 VDC RMS 60HZ, 1MIN.
6. LED RATINGS: FORWARD VOLTAGE: 2.2 VOLTS TYPICAL.
REVERSE VOLTAGE: 5 VOLTS MAXIMUM.
7. OPERATING: 750 CYCLES MIN.

MECHANICAL:

1. HOUSING MATERIAL : PBT UL94V-0. /COLOR:BLACK.
2. LED SIZE : 3.1*1.9*4.1*P=2.54mm.
3. SHIELD MATERIAL : COPPER ALLOY.
4. CONTACT MATERIAL : PHOSPHOR BRONZE T=0.35mm.
5. PLATING : GOLD PLATING OVER NICKEL.
6. PCB RETENTION PRE-SOLDER : 1 LB MIN.
7. PCB RETENTION POST-SOLDER: 10 LBS MIN.

ENVIRONMENTAL:

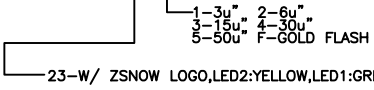
1. STORAGE : -40°C TO +85°C.
2. OPERATION: -40°C TO +85°C.
3. WAVE SOLDERING TEMPERRATURE: 230~250°C(3~5 SECONDS).
4. RoHS COMPLIANT.

MATES WITH MODULAR PLUG CONFORMING TO

FCC PART 68, SUBPART F.

CUL FILE NO. E345295

PART NUMBER: ZW2J88-JCXXS4X



: Inspection Item	DIMENSION IN mm [Inch]		ZSNOW		ZSNOW ELECTRONIC CO., LTD	
	TOLERANCE UNLESS OTHERWISE SPECIFIED		PART NUMBER		DRAWING NUMBER	
	SEE NOTE		SEE NOTE		ZW2J88-JCXXS4X-18	
	TITLE		TITLE		TITLE	
	RJ45 SIDE ENTRY LED GANG JACK 1*4		RJ45 SIDE ENTRY LED GANG JACK 1*4		RJ45 SIDE ENTRY LED GANG JACK 1*4	
APPROVE	CHECK	DRAW	PROJ.	SHEET 1 OF 1		
TIMLEE 09/07/18'	ZERO 09/07/18'	HAPPY 09/07/18'	SCALE 4:3	SIZE A3	REV P1	

THIS INFORMATION IS CONFIDENTIAL AND IS DISCLOSED TO YOU ON CONDITION THAT NO FURTHER DISCLOSURE IS MADE BY YOU TO OTHER THAN ZSNOW ELECTRONICS PRESERVE UNLESS AUTHORIZED APPROVATION FROM ZSNOW ELECTRONICS CO., LTD.